

Transfer



Selection

Parents' Meeting on the Transfer Procedure 2019/2020

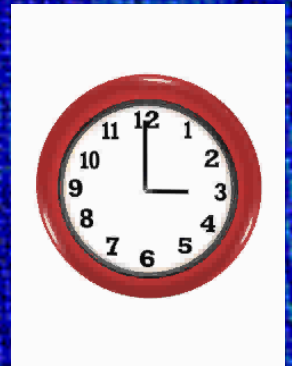


Presentation outline

- Timescale of Transfer.
- Details of Selection Tests
- What is expected from pupils?
- Maximising your son / daughter's potential.
- Transfer Report Form.
- Questions.
- Please visit : www.thetransfertest.com for further information

Timescales - Cambridge House and Ballymena Academy:

- Registration for Tests - (Parent Responsibility)
- Opens - 1st May 2019
- Closes - 6th September 2019
- ACCESS Arrangements (application)
- October - Parent Interviews-progress
- Saturday 9th November - 1st Paper
- Saturday 23rd November - 2nd Paper
- Saturday 30th November - 3rd Paper





Marking - AQE

- Jan 2020 - Age related adjustments will be made
- Best two scores taken
- Standardised Score for each candidate will be calculated



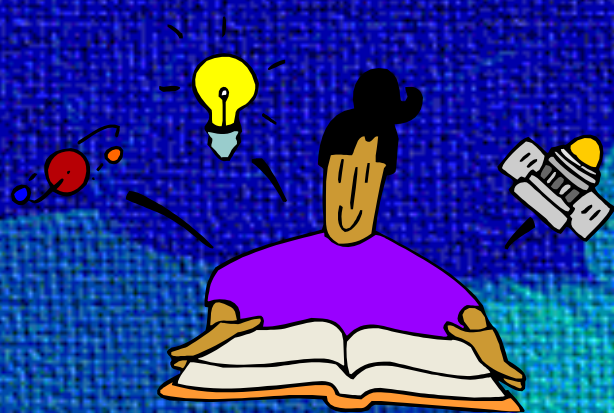
AQE Results



- Parents receive results on 25th January
- Standardised Score
- General Statistical information
- Results sent to receiving schools and Primary Schools requesting the information
- Parents must tick box on AQE Application Form giving school permission to see results
- A re-mark facility will be available until 10th February 2020.
- Re-mark results issued asap

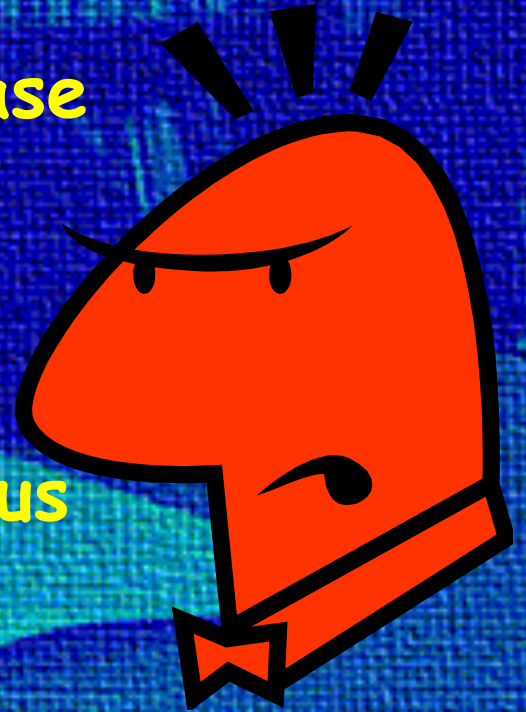
What is expected from Pupils / School?

- Give their best & work hard.
- Try to avoid pressure.
- Hard 14 weeks in Sept / Dec both in school and at home.
- 2 P7 preparation papers per week
- Regular testing proves useful:
 - Reinforces knowledge base
 - Build confidence.
 - Identifies areas for development.



HOMework

- No more than 1-1.5hrs homework
- Volume of homework will increase
- Help with homework?
- Encourage independence
- Both classes cover same syllabus
- Set to match ability



Maximising your son's /
daughter's potential.

What we ask of you

- Monitor progress.
- Sign homework on a regular basis.
- Ask to see papers.
- Contact us if you have any concerns.
- Consider what type of school will be best for your son / daughter.
- Not to get too frustrated!
- Be positive



Transfer Form

- Completed by parents
- Sample Form will be issued to aid completion
- Contact school for advice if necessary

The Transfer Form

- General pupil information (name, address etc)
- Preferences of school (minimum of 3)
- How criteria is met
- Other additions are possible



AQE Special Circumstances

- Special Circumstances – if performance has been affected beyond his /her control
- Medical/educational evidence required
- Details recorded on Transfer Form.

**THAT CONCLUDES THE
PRESENTATION!**

ANY QUESTIONS?

Please visit :
www.thetransfertest.com for
further information

